



**Castle View Academy**

The best in everyone™

Part of United Learning

# Supporting Our Students to Succeed

At Castle View we ensure excellent outcomes through focusing on the three pillars of student success

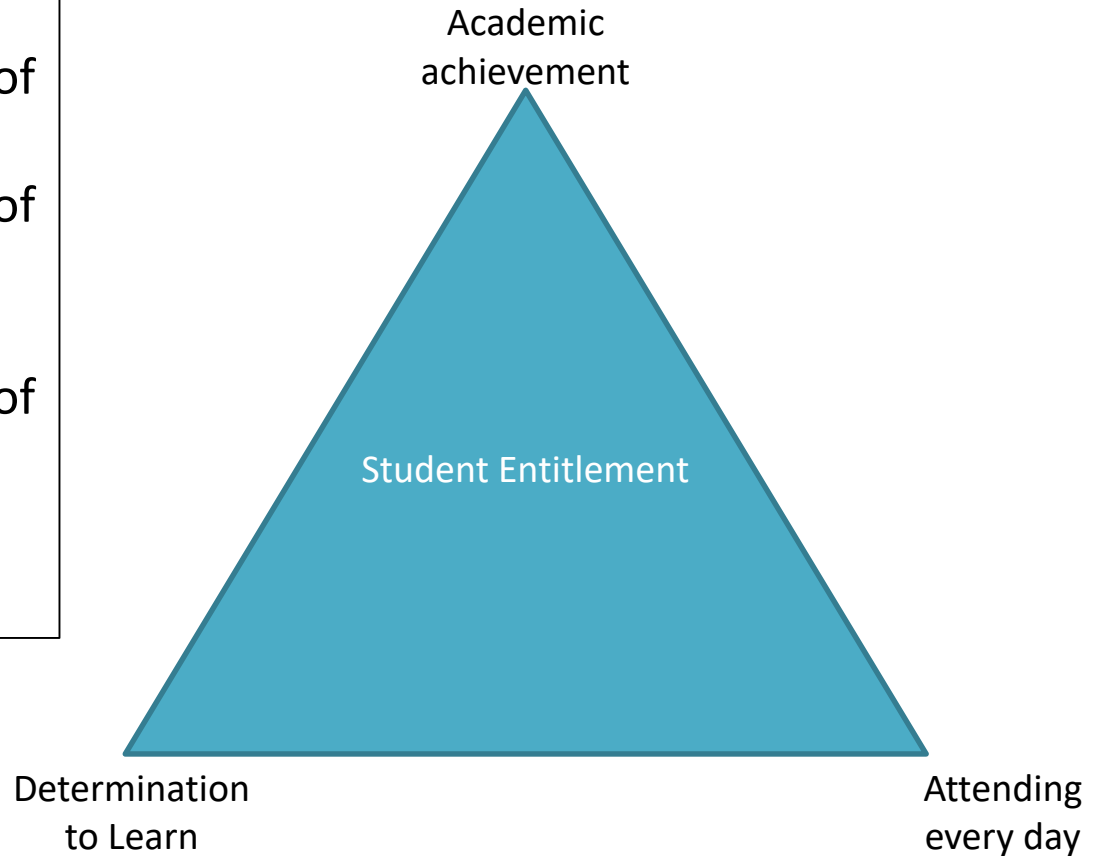
- A thorough understanding of who is attending school
- A thorough understanding of how determined students are in every lesson
- A thorough understanding of how students are doing through summative assessments



**Castle View Academy**

The best in everyone™

Part of United Learning





# Castle View Academy

The best in everyone™

Part of United Learning

- At Castle View Academy we believe that all pupils should expect to receive an education that enables them to achieve the best possible educational and wider outcomes, and become confident, able to communicate their own views and ready to make a successful transition into adulthood.
- Every pupil brings a unique pattern of strengths and areas of need to our community and the academy aims to fulfil the potential of all pupils.
- Our graduated approach to Inclusion, SEND and Exclusion ensures that everyone understands their responsibilities within our academy.

# Monitoring student success and inclusion at Castle View Academy



**Castle View Academy**

The best in everyone™

Part of United Learning

- Our behaviour for learning policy enables the us to keep an accurate record of students who are finding aspects of learning more challenging.
- Each week the Student entitlement team meet to discuss students who have lesson send outs and attendance concerns.
- Through the 'tracker' meeting students are placed on our tier system where the appropriate level of support can be provided.

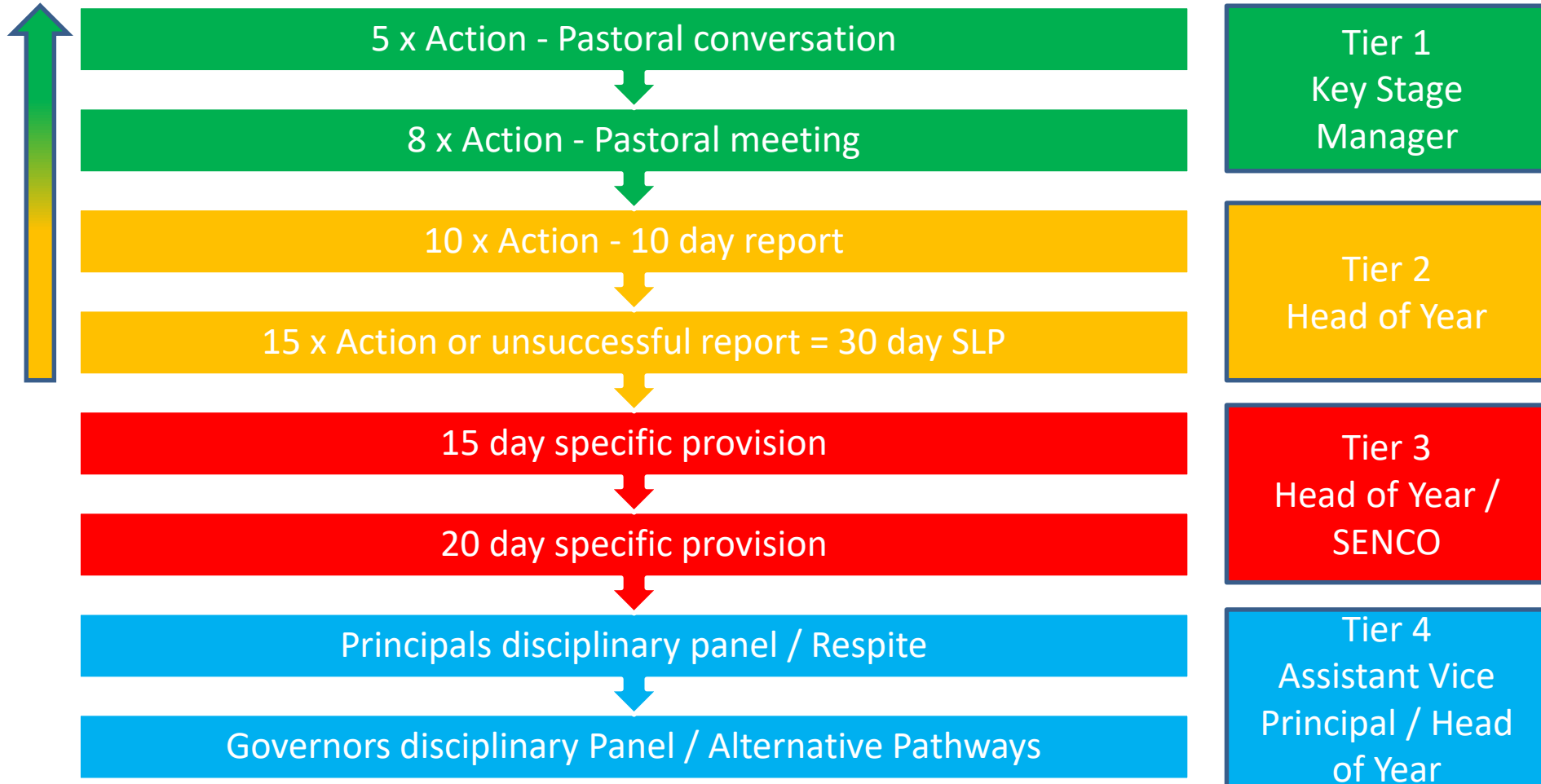
# How we support our students to succeed



**Castle View Academy**

The best in everyone™

Part of United Learning



# Inclusion Support Provided



**Castle View Academy**  
The best in everyone™

Part of United Learning

## Tier 1

- Face to face meeting with Key Stage Manager
- Parent meeting
- Regular parent contact via telephone
- Lesson observation
- Pupil questionnaire
- Peer review
- Seating plan review
- Teaching strategies review
- Positive report card
- Positive reflection diary
- Time out
- Withdrawal plan
- Risk management plan
- Homework club
- Tutor check
- Epraise rewards

## Tier 2

- Successful learning plan
- Lesson observation
- Staff questionnaire
- Student questionnaire
- Teaching group analysis
- Seating plan analysis
- Teaching strategies analysis
- SEND assessment
- Parent meeting
- External assessment e.g. Education Psychologist
- Intervention groups
- Timetable reduction
- Behaviour support plan
- Peer mentor
- CAMHS referral
- Early Help assessment
- Epraise / rewards initiative

## Tier 3

- Phoenix provision
- English and Mathematics intervention
- Social skills assessment
- Alternative timetable
- Respite at an alternative education establishment
- ISP panel referral

## Tier 4

- Referral to Local authority inclusion panel
- Reassessment of provision
- Managed move (Hampshire only)
- Harbour provision

This list is not exhaustive and is modified dependent on the needs of the individual